

**xfriend**<sup>®</sup>  
Deskbar incl. Hotkey

**Handbook**  
Version 2.9



With xfriend® Deskbar and the new Hotkey leading to a fast input mask, you now have easy access to xfriend®'s search features from your Windows Desktop without having to open a browser first.

Under Windows 7 there is only the new fast input mask available. It will be activated through the Hotkey (Alt+1) or when clicking in the taskbar on the icon.

## 1. System requirements

- Installed xfriend® software (local or remote access)
- Microsoft Windows 7 / 2008
- Microsoft .NET 3.5 Framework (will be installed automatically if not available yet)

## 2. Installation

### Please note:

Should you already have a version of xfriend® Deskbar installed, you will need to de-install it before installing this new version.

To do so, please follow the path

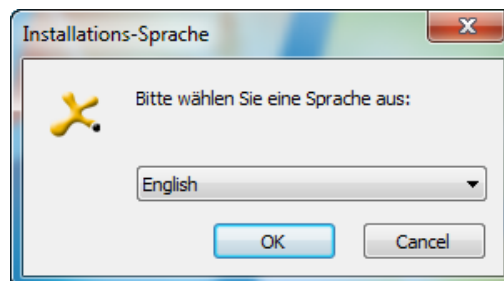
„Start“ -> „programs“ -> „xfriend®“ -> „xfriend® Deskbar“

and hit the icon „Uninstall“. The old xfriend® Deskbar will then automatically de-installed.

The xfriend® Deskbar can then still be seen even though it has been successfully de-installed because Windows conceals the components. You may now install the new xfriend® Deskbar without restarting your computer. After a Windows Restart the previously concealed components will then also be deleted and the new xfriend® Deskbar will be shown.

Start the installation program for xfriend® Deskbar by clicking on the corresponding “xfriend Deskbar.exe” file.

Firstly choose your Installer Language. The chosen language will be set as default program language. You can change the language later, too.



Installer -- xfriend® Deskbar Select Language

An installation assistant will guide you through the installation.



Illustration 1 - xfriend® Deskbar Installation Assistant

On the next screen, please accept the license agreement.

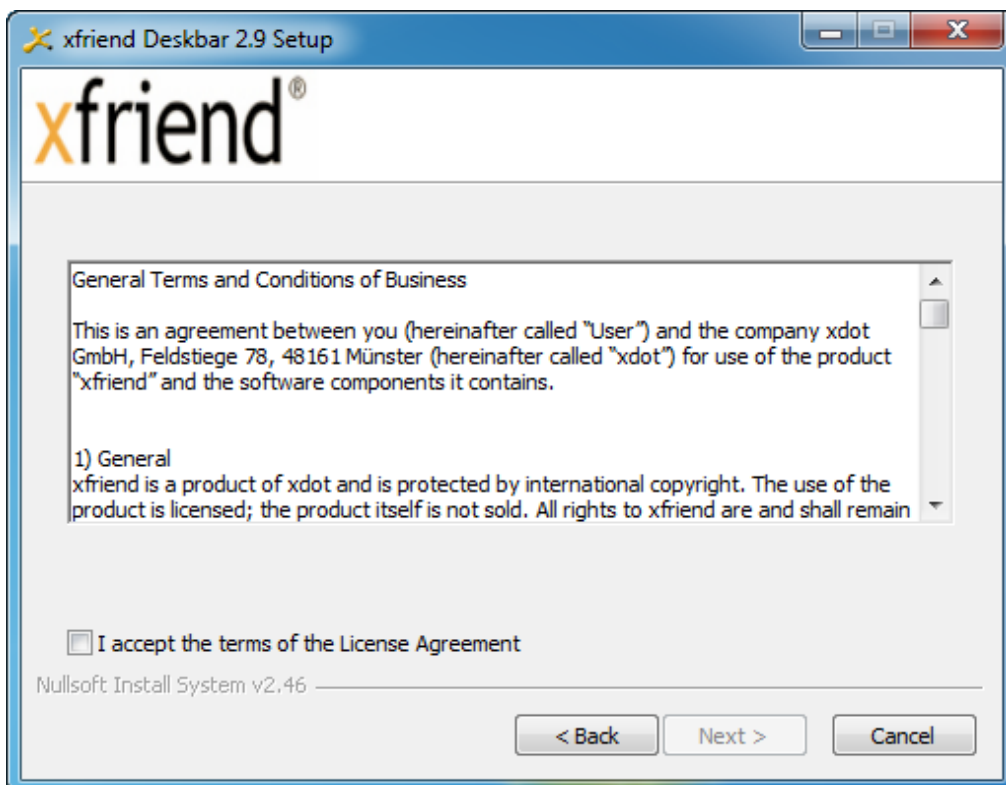


Illustration 2 - xfriend® Deskbar License Agreement

After that, please choose the target folder for the installation.

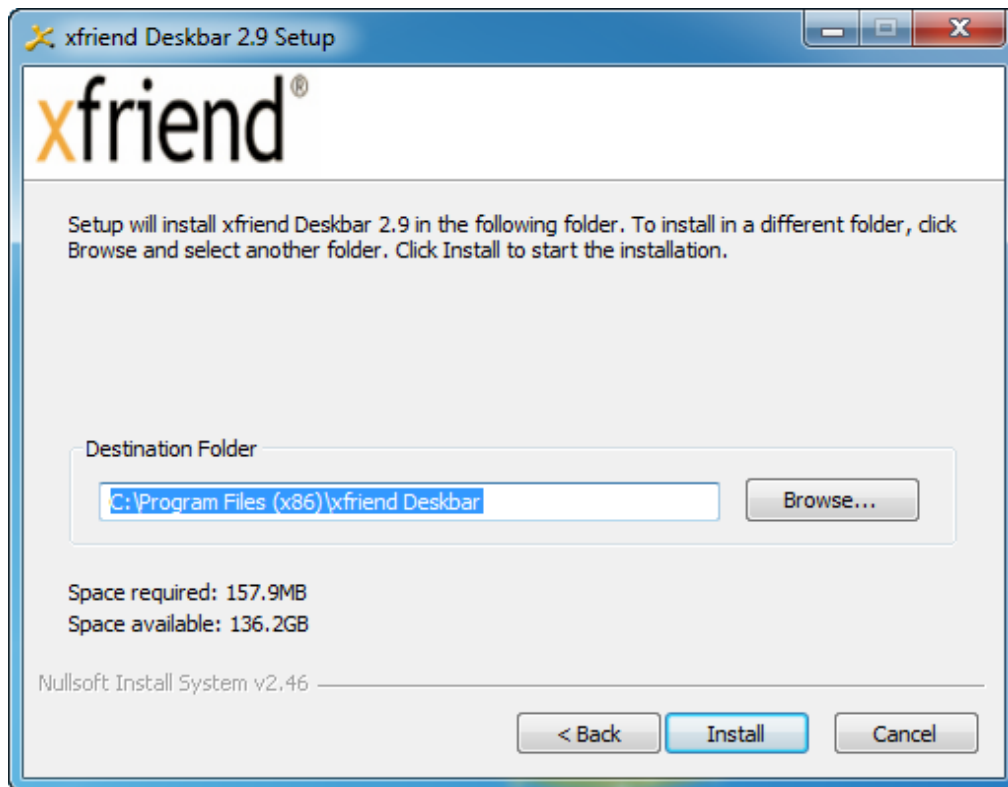


Illustration 3 –Target folder for installation

Then hit 'install' to install the xfriend® Deskbar.

**Please note:**

Should you not have Microsoft .NET 3.5 Framework installed on your computer, you will receive a note during the installation that the .NET 3.5 Framework is missing.

You can then automatically install the .NET 3.5 Framework together with the xfriend® Deskbar installation. To do so, you will need access to the internet.

xfriend® Deskbar will load the .NET 3.5 Framework directly from the Microsoft Homepage. Depending on your connection speed, this may take a few minutes.

After successful installation the following screen will appear:



Illustration 4 - Installation completed

In case you have also installed the .NET 3.5 Framework during the xfriend® Deskbar installation, it may be necessary to restart your computer now. You will then be notified accordingly.

**Please note:**

The old xfriend® Deskbar can still be seen even after the de-installation. Only after a Windows restart will the concealed data be deleted and the old xfriend® Deskbar will be completely deleted.



### 3. De-installation

You can delete the xfriend® Deskbar from your computer at any time by running the de-installation program.

You can do this by

- a) "Start", "Control Panel", "Programs" or
- b) "Start", "Programs", "xfriend® Deskbar", "Uninstall"

**Please note:**

When running the de-installation program, only xfriend® Deskbar is removed; a possibly existing local installation of xfriend® will not be altered!

**Please note:**

Before running the de-installation program, please make sure that xfriend® Deskbar is not running.

- 1. Call the fast input mask
- 2. Right click on the fast input mask and click on "Quit"

**Please note:**

The old xfriend® Deskbar can still be seen even after the de-installation. Only after a Windows restart will the concealed data be deleted and the old xfriend® Deskbar will be completely deleted.

### 4. Start Deskbar automatically

To activate or deactivate the autostart functionality of xfriend® Deskbar there is an option under Configuration. The changes take effect after restarting Windows.

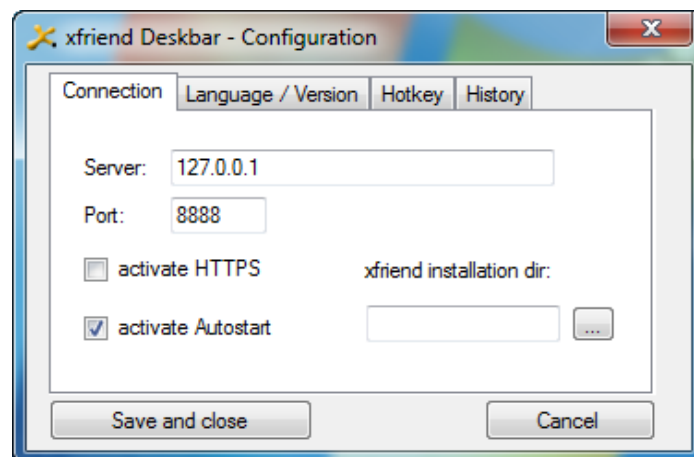


Illustration 5 – activate Autostart



## 5. Hotkey / Fast input mask

With a configurable key or key combination you can call up the fast input mask while Deskbar is activated

**Default setting for the Hotkeys is the key Alt + 1.**

The search results are shown as usual in a browser.

The fast input mask takes over the last used search category of the Deskbar or the last active fast input mask as shown in an example below “in all indexes”. The fast input mask additionally features an AutoComplete function just like Deskbar which further facilitates the input procedure.

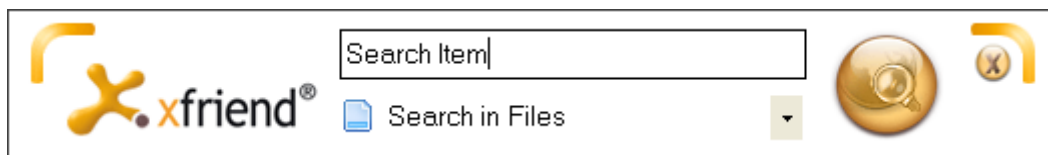


Illustration 65 - xfriend® fast input mask



## 6. Configuration

### 6.1 Connection

Before you can start searching with xfriend® and the xfriend® Deskbar, you need to check the link settings from xfriend® Deskbar to your xfriend®.

Please follow these steps:

- Call the fast input mask with Hotkey
- Rightclick on the fast input mask and choose “Configuration” from the context menu
- On the window choose “Connection”

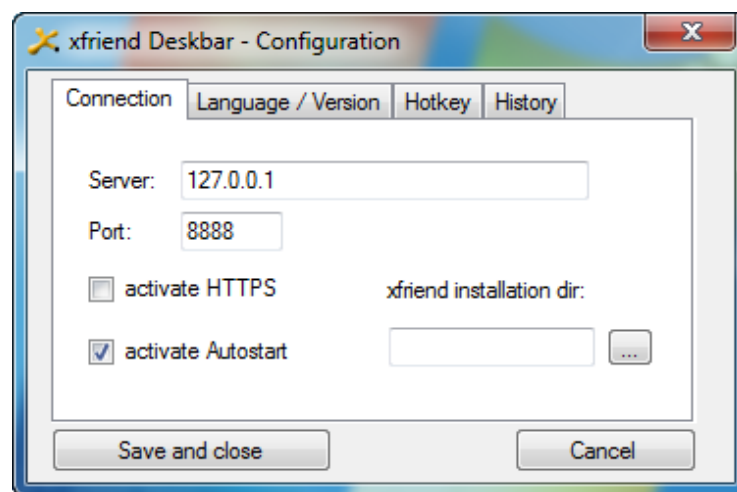


Illustration 7 – Settings xfriend® Deskbar

- You will need to input the following information:
  - Server: on which computer (xfriend®) do you want to start the search? For local searches (i.e. xfriend® and Deskbar are installed on the same computer) e.g. "localhost".
  - Port: for which port is your xfriend® configured? Standard e.g. "8888", with HTTPS (Encoding with SSL) „8889“  
For the search on external servers you should for security reasons always activate HTTPS.
  - Activate Autostart: should xfriend® Deskbar automatically started with Windows?
  - xfriend® installation dir: Choose here the path to your local installed xfriend®. xfriend® will be started automatically if you are searching through xfriend® Deskbar and xfriend® is not running.
- Click on “Save and Close”.

### 6.2 Language / Version

The Deskbar and fast input mask are available in German and English. On the menu item “Language / Version” you can switch between these two languages.

Under this menu item you can also switch between the different available xfriend® versions. If you have installed an “xfriend® free” version, some of the shown functions such as “search



in contacts” will not be supported. You can change these settings (hide / unhide functions) under this menu item.

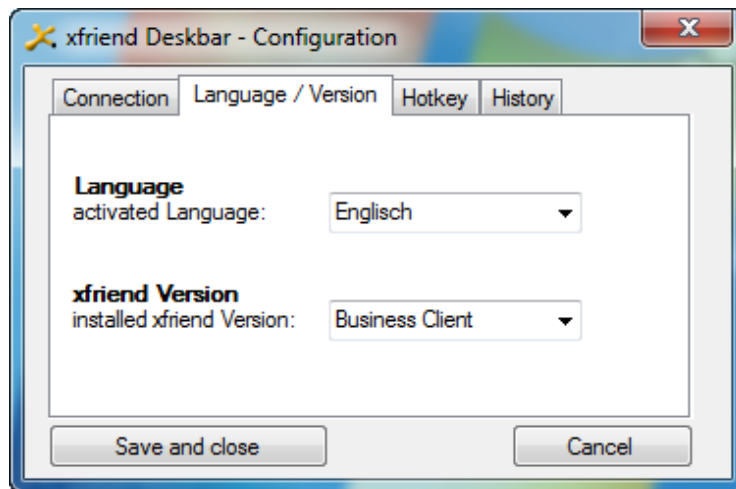


Illustration 8 – Settings xfriend® Deskbar

### 6.3 Hotkey

The functions described in chapter 5 of the work manual can be configured under the menu item “Hotkey”.

- The key or key combination,
- whether the fast input mask shall always be visible as the top window,
- whether the fast input mask shall close automatically after inputting the search item,
- whether the fast input mask shall be hidden if a mouse click outside of the mask happens.

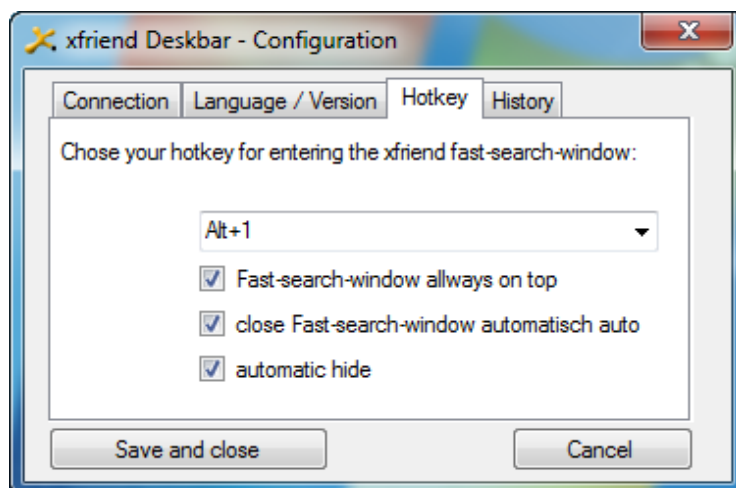


Illustration 9 – Settings xfriend® Deskbar



## 6.4 History

The already mentioned AutoComplete-Feature uses its data from a locally saved list of all of your past searches. You have access to this list under the menu item "History" and you can delete it if you wish.

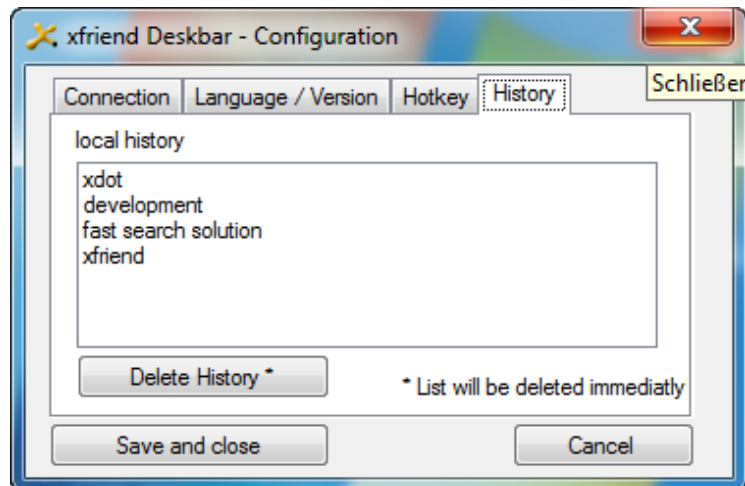


Illustration 10 – Settings xfriend® Deskbar

## 7. Searching with the xfriend® Deskbar

To start a search now, just enter the search item into the xfriend® Deskbar. With a double click on the space you can mark already existing items to possibly overwrite them if needed.

### All steps in detail:

1. Enter a search item into the Deskbar.
2. With "Enter" or by clicking on the search button the search is started.
3. A Browser window with a list of all search results will be shown.